



Solidarity with Mayotte

3 months of support

MARCH 2025

Thanks to your generosity, we have been able to prioritize support for the most vulnerable people in Mayotte. To honor your trust, we are committed to keeping you informed about the specific impact of your contributions. That's why we are pleased to share a selection of the projects you have helped make possible in Mayotte in the following pages.

Thank you again for your invaluable support.



“Three months after the disaster, the situation remains very concerning”

Karine Meaux, Head of the Emergency Response Department at Fondation de France, reflects on the current situation in Mayotte and Fondation de France's priorities in this hard-hit region.

What is the current situation in Mayotte?

Three months after the disaster, the situation in Mayotte remains deeply concerning. Despite the measures in place, particularly through the organizations we support, significant challenges persist—especially in the distribution of essential aid such as water and food. Another major challenge is ensuring that residents have clear information about available assistance and expected wait times. While a public health crisis due to the lack of clean water has been avoided thanks to close government monitoring, social tensions remain high.

What are Fondation de France's priorities three months on?

Fondation de France remains fully committed on the ground in Mayotte. Three missions have already been carried out in close collaboration with our partner organizations. Our top priority continues to be providing essential aid, along with medical and psychological support for affected communities. We are also supporting organizations that offer educational, social, and cultural activities for children. Last month, we traveled to Mayotte to launch pilot projects aimed at securing dangerous housing, preventing

landslides, and supporting residents in repairing their homes. We are committed to sustainable and environmentally responsible reconstruction in partnership with public authorities. To help revive economic growth, we are funding several farmer-led organizations to purchase seeds and tools, reinforcing food security in the region. At the same time, we have begun discussions to support environmental initiatives—including river and forest clean-ups and mangrove replanting—to protect the region's vital biodiversity.

How do the various stakeholders collaborate?

One of the main challenges remains ensuring close coordination and collaboration among local nonprofits, businesses, regional authorities, and government agencies to provide an effective and unified response to both immediate needs and long-term recovery.

We are fully committed to fostering dialogue among all stakeholders, with our committee playing a key role in this effort. Comprised of emergency response experts and specialists from diverse yet complementary fields, the committee meets weekly to ensure swift action and maintains a strong focus on the responsible allocation of donated funds.



Restoration of existing water sources in the bangas of Kwale by specialized teams at Solidarités International.



Preparation of meals by local restaurateurs with the support of the NGO World Kitchen, distributed by the Tsingoni Territory Management Association.

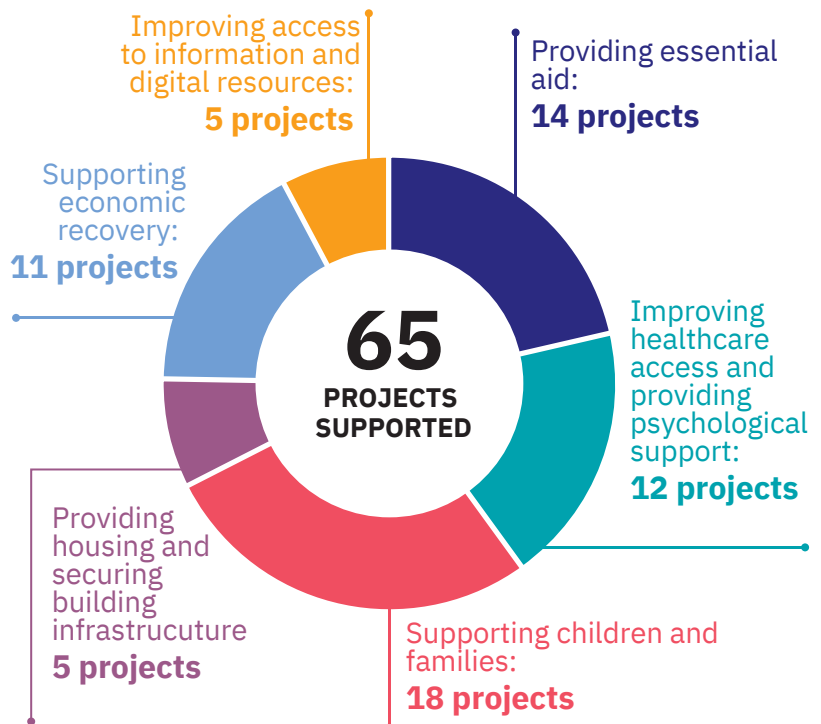
Key Figures

as of February 28 2025

338,000
DONATIONS

42.7 millions
EUROS RAISED

6.2 M€
allocated



Initiatives Supported in Mayotte

On December 14, a cyclone of unprecedented magnitude devastated the archipelago of Mayotte. Already engaged in disaster preparedness efforts in the region, Fondation de France immediately mobilized, working with its local nonprofit partners in the Indian Ocean to launch the first emergency response actions. Thanks to the generosity of donors, €42 million was raised. In the past three months, €6.2 million has already been allocated to fund 65 relief initiatives across the affected areas.

Meeting essential needs

Amid the ongoing humanitarian crisis, Fondation de France remains committed to supporting local organizations in delivering essential aid, including food assistance, access to clean water, and the distribution of hygiene kits.

The organization **LEPAM** (Luttons Ensemble pour un Avenir Meilleur à Mayotte) is distributing water, food, clothing, and hygiene products in the neighborhoods of La Vigie and Labattoir in Petite-Terre, as well as directly to homebound individuals unable to travel. LEPAM also provides psychosocial support, professional development assistance, and mentorship programs, including academic tutoring.

Yes We Can Nette has reopened its social grocery store, which includes a laundromat, and encourages residents to recycle aluminum cans in exchange for discounts. The organization also distributes food vouchers and runs workshops on waste sorting and disaster preparedness.

In Petite-Terre, the association **SCH** delivers essential supplies—including food, clothing, and hygiene products—to more than a hundred vulnerable families unable to leave their homes.

Providing Shelter and Securing Housing

After the cyclone struck, a significant portion of the island's fragile, make-shift housing—representing 40% of all homes—was completely destroyed. In response to this unprecedented crisis, Fondation de France is supporting multiple organizations working to secure and reinforce residences.

Architectes de l'Urgence and CAUE (Conseil d'Architecture, d'Urbanisme et de l'Environnement) conducted an assessment of damage to both public and private buildings. Their findings indicate that the hardest-hit areas are in the north, east, and west of Grande-Terre, with the most severe destruction affecting informal settlements and lightweight residential structures.

To assist affected residents, **CAUE** is developing resources to guide them through rebuilding efforts and is hosting community-based support sessions to address technical, administrative, and legal concerns. Additionally, four new architect-lawyer teams have been deployed to provide expert guidance on sustainable reconstruction.

The NGO Architectes de l'Urgence is conducting an assessment of damage to and private buildings in Mayotte



Improving access to healthcare and providing psychological support

To address healthcare needs and provide psychological support, Fondation de France is supporting several organizations working with the most vulnerable populations.

The NGO **Santé Sud** is deploying community-based healthcare services across the Petite-Terre region, reaching approximately 35,000 people. Its team of medical professionals is also developing an epidemiological monitoring system to help prevent public health risks.



The NGO Santé Sud addresses urgent healthcare needs.



The organization **Machaka Media Ana** is working to improve healthcare access for those in extreme poverty. In Longoni, it arranges transportation for patients who cannot reach hospitals or pharmacies, delivers meals and water to the most remote areas, and provides medical supplies to individuals with diabetes.

In Tsingoni, **Autisme Mayotte** has established a day center for children and adults with autism, as well as their families. The organization offers tailored educational and cultural activities, along with a “school for parents” that provides families with spaces for support, discussion, and training. Additionally, its community garden serves as both a therapeutic and economic resource, where participants learn agricultural practices and share the harvest.

The association Kaweni Nouvelle Aire welcomes around a hundred young people to its activity center.



Sophie Lasserre, Emergency Programs Manager at Fondation de France, went to Mayotte at the beginning of February to meet with local organizations and healthcare professionals.

“After Cyclone Chido, the need for healthcare and mental health support is immense. The entire population has been affected, making it crucial to provide immediate assistance to prevent future complications. In Mayotte, healthcare professionals are working tirelessly to meet the overwhelming demand by organizing group activities and remote interventions. Fondation de France is supporting organizations like **Terra Psy**, which leads support groups in schools and conducts mobile medical outreach to assist isolated individuals. Additionally, it has extended its support for the **field hospital** near Mamoudzou to help alleviate pressure on the overwhelmed local hospital. Our priority is to ensure access to essential healthcare and psychological support while also caring for those on the ground—because it is difficult to help others when struggling oneself. Physical and mental health remain a cross-cutting priority in all our initiatives.

Supporting children and families

Children have been particularly affected by the cyclone's aftermath. To ensure continuity in their education and minimize disruptions, Fondation de France is supporting local organizations that assist families, provide school supplies and toys, and organize educational, sports, artistic, and cultural activities.

In Koungou and Mamoudzou, the association **Kaweni Nouvelle Aire** welcomes around a hundred vulnerable children and young people in a day center, where they receive educational support and participate in structured activities. The organization also reaches out to isolated communities, providing food assistance and health guidance. To promote professional integration, it offers agricultural training programs, enabling young people to gain expertise while supplying fresh produce to their families.

The **Mission Locale de Mayotte** supports over 1,000 young people aged 16 to 25, primarily from underserved neighborhoods. Two mobile units travel through rural areas, providing career guidance, administrative support, and social services, as well as distributing essential supplies.

To address the urgent need for child support services across the island, the **Fédération des Familles Rurales de Mayotte** is establishing dedicated childcare centers in seven municipalities. At the same time, it is training

around 100 young people aged 16 to 30 for the BAFA (Brevet d'Aptitude aux Fonctions d'Animateur) certification, strengthening the teams providing support on the ground.

Supporting economic recovery, with a focus on agriculture

Alongside efforts to address immediate needs, Fondation de France is also supporting initiatives aimed at preparing for the reconstruction phase and revitalizing economic activity, particularly in agriculture.

Several farming cooperatives specializing in market gardening, livestock, and agroforestry are working to clear their land, purchase seeds and plants, and replace essential equipment to restart cultivation before the end of the rainy season. These efforts are complemented by technical support from the **Mayotte Chamber of Agriculture** (CAPAM) and the **Department of Food, Agriculture, and Forestry (DAAF) of the Mayotte Prefecture**.

At the same time, the organization **Initiative Mayotte** is fostering entrepreneurship and job creation. With backing from the **Mayotte Departmental Council** and Fondation de France, it has established a financial support fund for small business owners. This initiative offers interest-free loans of up to €20,000, helping local entrepreneurs get back on their feet and accelerate the region's economic recovery.

For more information on these initiatives, visit fondationdefrance.org 

Thank You

We extend our heartfelt thanks to everyone who has joined us in this collective effort:

Thank you to all the donors whose generosity is fueling this movement of solidarity. We are deeply touched and grateful for this remarkable outpouring of support.

We also extend our gratitude to the businesses, institutions, and local authorities standing by our side: AFNIC, Aroma-Zone, Association Comité Amis Emmaüs Le Puy, Association Le Liseron, Association Nour, Assolem, Atalian, Banque de France, Caisse des Dépôts, CAPSSA, Comité d'amis d'Emmaüs, Communauté d'Agglomération du Bassin de Bourg, Communauté d'Agglomération d'Aurillac, Conseil Départemental d'Ille-et-Vilaine, DÉKUPLE, Fédération Française de Bridge, FNSA-ESH, Fondation d'Entreprise Caisse d'Épargne Loire Centre, Fondation Paradis, Fonds de Dotation de l'Interallié, Fonds de Dotation SERFIM, Fonds L'Oréal pour l'Urgence Climatique, France Road, Grand Besançon Métropole (GBM), Groupe Colas, Groupe JLO, IPECA, Kiwanis Saint-Étienne, AXA Mutual Funds Philanthropy, Mairie de Besançon, Matmut, Mennecy, Mutuex Union, REEL International, Servair-Group, SFIL, Syndicat des Médecins de la Drôme, and UpCoop.

Finally, we are grateful to our media partners for amplifying our call for solidarity, including France TV, Radio France, the TF1 Group, M6-RTL Group, and BFM.